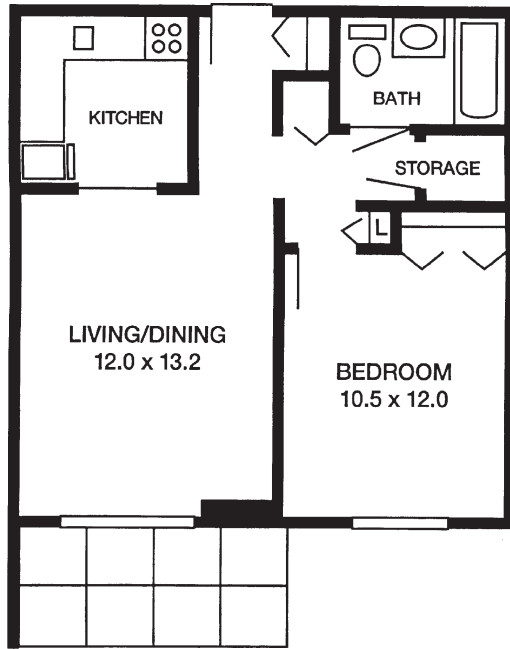
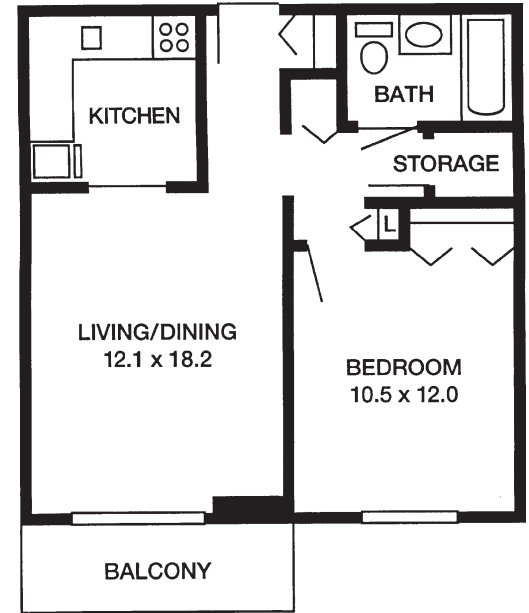


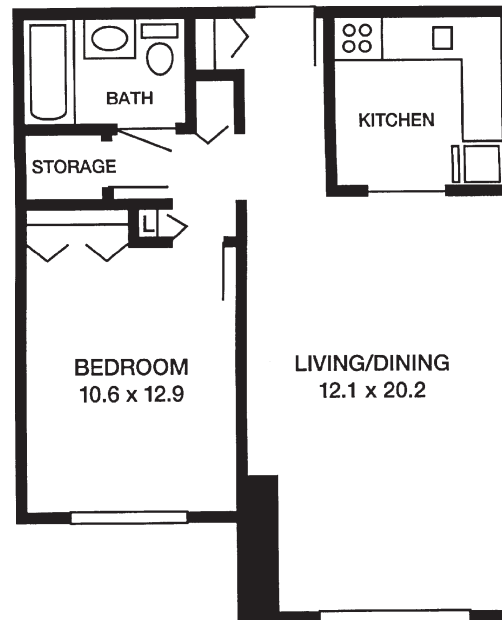
Trolinger/New River House Apartment Floorplans



PATIO (545 sq.ft.)

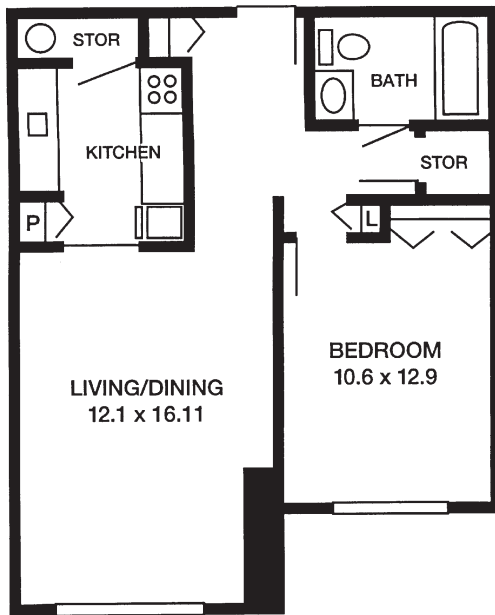


BALCONY (545 sq.ft.)



**STANDARD
(600 sq.ft.)**

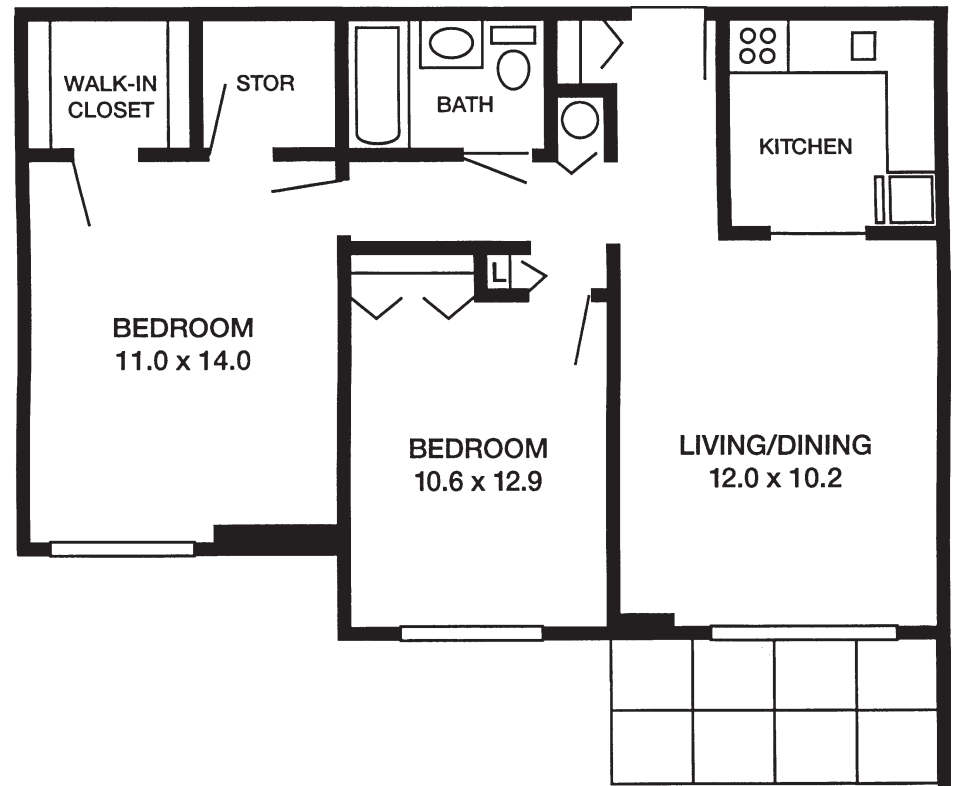
Specialized floorplans on reverse



BARRIER-FREE (600 sq. ft.)

Eligibility for barrier-free apartments is restricted to applicants with a disability that requires the special features of these apartments. These features include larger living rooms, lower closet shelves and bars, wider hallways, and unobstructed access beneath the sinks.

All barrier-free apartments are located on the second floor, which is the ground entrance level to all Warm Hearth apartment buildings.



TWO-BEDROOM (800 sq.ft.)

Eligibility for two-bedroom apartments is restricted to that of two-person households. Please note that only 8 of our 144 apartments are two-bedroom apartments. Availability is extremely limited.